



Winchelsea Road, London, N17 6XQ

Offers Over £600,000



Nestled on Winchelsea Road in London, this splendid Victorian end terrace house presents an exceptional opportunity for both families and investors alike. Boasting four generously sized bedrooms, this property is designed to accommodate modern living while retaining the charm of its era. The spacious reception rooms are perfect for entertaining guests or enjoying quiet family evenings, enhanced by the high ceilings that create an airy and inviting atmosphere.

With two well-appointed bathrooms, convenience is at the forefront of this home, ensuring that busy mornings run smoothly for the entire family. The property is currently licensed for selective rental, making it an attractive option for those considering investment, yet it equally serves as a wonderful family residence.

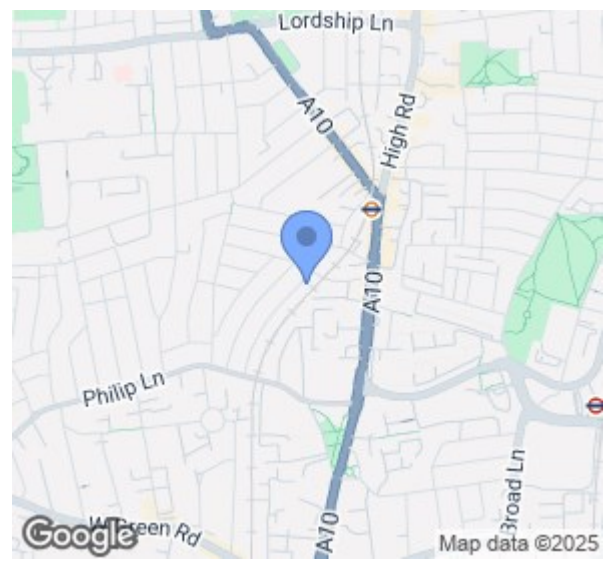
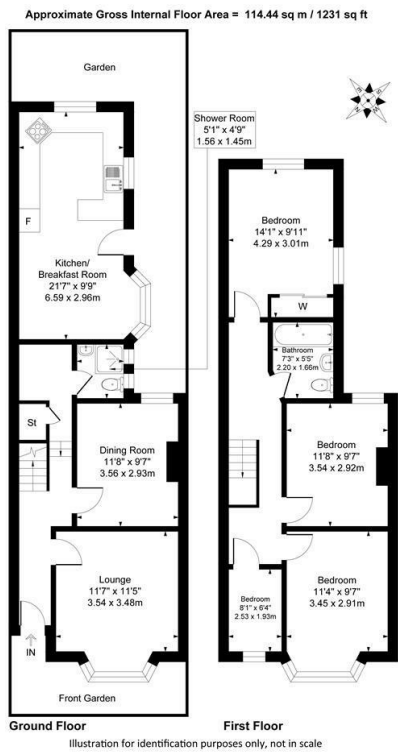
Situated in close proximity to Seven Sisters, residents will benefit from excellent transport links and a vibrant local community. The area is also home to a variety of good schools, making it an ideal choice for families seeking quality education for their children.

This chain-free property offers a seamless transition for prospective buyers, allowing for a swift move into your new home. With its blend of space, character, and location, this Victorian terrace is a rare find in the bustling heart of London. Don't miss the chance to make this delightful house your own.

- Four bedroom Victorian Terrace
- Two receptions
- Large kitchen diner
- Three double bedrooms
- Potential to extend into the loft
- Close to Seven Sisters tube station
- Close to local amenities
- Chain free

Viewing

To arrange a viewing on this property or require further information please contact one of our team on 0208 059 4444



Energy Efficiency Rating		
	Current	Potential
Very energy efficient - lower running costs		
(92 plus) A		
(81-91) B		
(69-80) C		
(55-68) D		
(39-54) E		
(21-38) F		
(1-20) G		
Not energy efficient - higher running costs		
England & Wales		EU Directive 2002/91/EC



These particulars, whilst believed to be accurate are set out as a general outline only for guidance and do not constitute any part of an offer or contract. Intending purchasers should not rely on them as statements of representation of fact, but must satisfy themselves by inspection or otherwise as to their accuracy. No person in this firm's employment has the authority to make or give any representation or warranty in respect of the property.